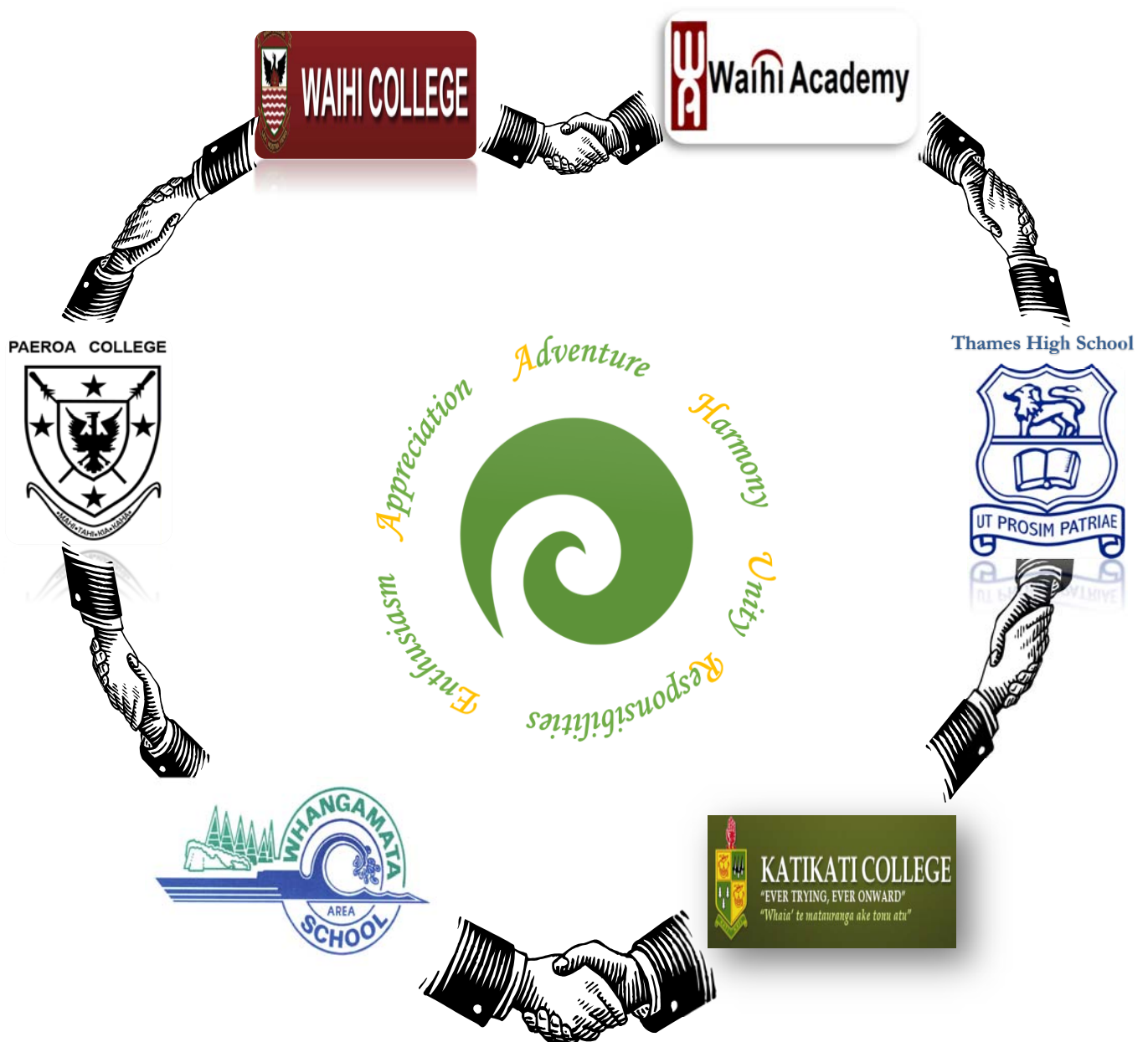


# *The Ahurea Experience*



Dreams are for real through the *Ahurea* experience!

# The Ahurea Experience

## Contents

I. Introduction and <i>Ahurea</i> Cultural Interactive Adventure .....	3
II. Team Unity.....	5
III. The <i>Ahurea</i> Experience Course	
◆ Outdoor Education (Week 1) .....	10
◆ Daily schedule and Timetable (Week 2).....	11
◆ Evening Dynamic Activities Outline (Week 1 and Week 2).....	13
◆ Course Outline (Week 3 and Week 4) The <i>Ahurea</i> Experience Whangamata Area School-Cultural Interactive Adventure.....	15
Waihi College-Cultural Interactive Adventure.....	16
Katikati College-Cultural Interactive Adventure.....	17
Paeroa College-Cultural Interactive Adventure.....	18
Thames High School-Cultural Interactive Adventure.....	19

"Life is like riding a bicycle. To keep your balance, you must keep moving."

— *Albert Einstein*

# The Ahurea Experience

A rewarding, fun and life-changing cultural adventure camp in the heart of the Waihi gold mining district.

## I. Introduction and Ahurea Cultural Interactive Adventure

The Ahurea (Maori culture) cultural interactive adventure camp is a specially-designed 4 week programme for international students who wish to embrace and explore the English language through experienced-based learning programmes. The camp covers essential English skills including listening, speaking, reading and writing with a strong focus on New Zealand multiculturalism.

The primary purpose of the programme is to help participants integrate into local the environment and elevate their current English level through participating in and exploring New Zealand's unique multicultural society. Through this process, participants will learn practical English skills and gain the confidence to use them in a variety of situations of daily life.

The Ahurea Experience will enhance each student's comprehension and proficiency of English and will also provide a greater understanding of New Zealand multicultural diversity as well as a richer, broader global vision of our One World.



Adventure  
Harmony  
Unity  
Responsibility  
Enthusiasm  
Appreciation



*This little light of mine, I'm gonna let it shine.  
Every day, everywhere I go, I'm going to let my little light,  
Let it shine, let it shine, let it shine!*

Anuria is bringing students together from both New Zealand and other countries for the purpose of growing together and building friendship and mutual respect.

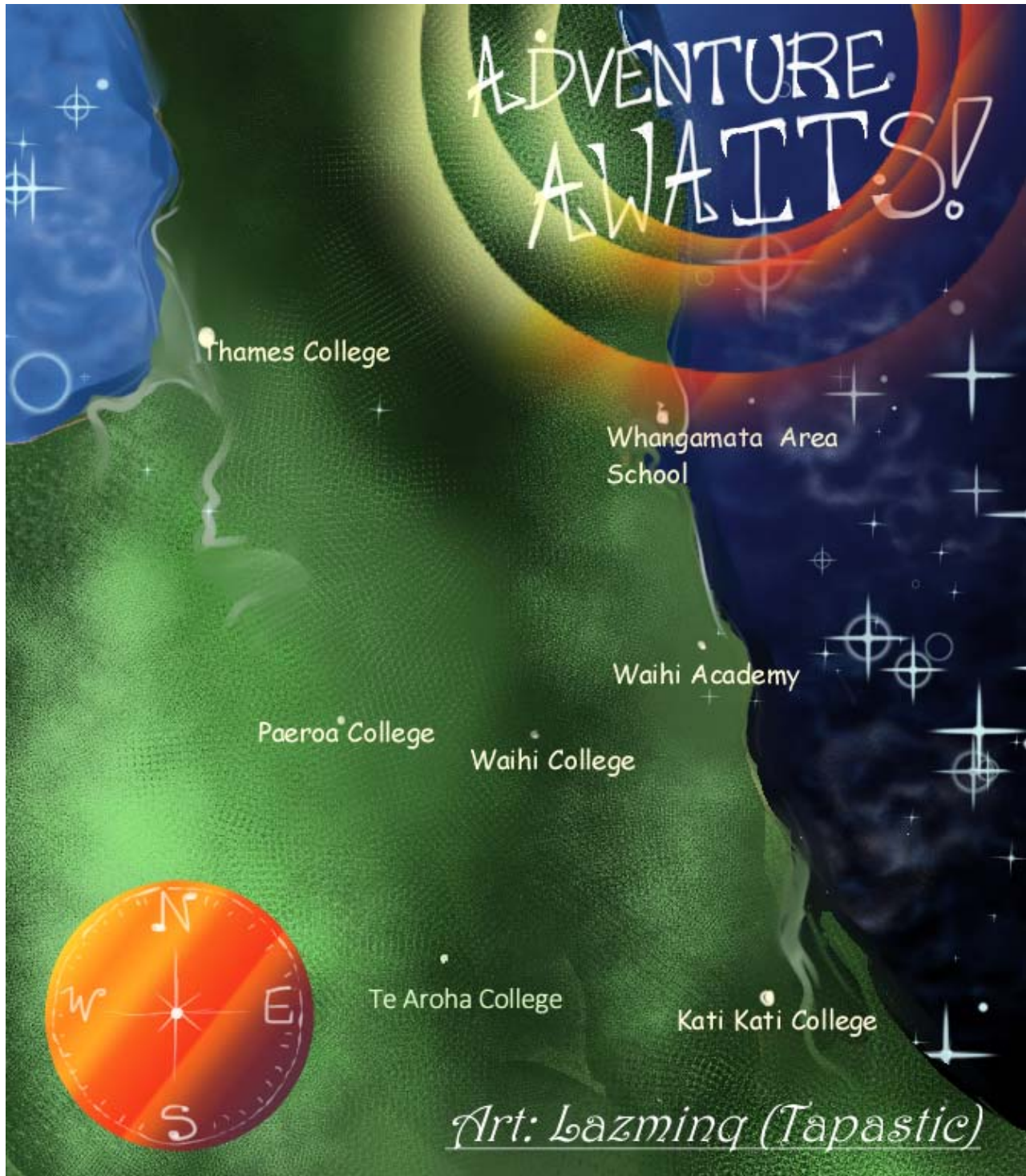
### The focus of Ahurea include:

- To allow participants to explore various cultures through arts, music, sports, culinary arts and other languages.
- To be a viable international multicultural family.
- To increase multicultural awareness, enhance family values, social responsibility, self-restraint, respect for ourselves, others, our environment and our past, and expose kids to other languages and ideas.



# The Ahurea Experience

◆ *Ahurea* Cultural Interactive Adventure Map :



## II. We interact with four local schools to create an interactive learning programme tailor-made to meet out students' needs. Our Team Unity are:

### 1. Whangamata Area School ([www.whangamata.school.nz](http://www.whangamata.school.nz))

Whangamata Area School is a co-educational school which offers a unique educational opportunity with schooling from Year 1 right through to Year 13. The school has the advantage of having a range of specialist teachers and facilities, and also of being able to retain the flexibility and pastoral support individual students need. We are able to offer small class sizes throughout the school. Attending an Area School, our students enjoy advantages not offered in other schools:

- Continuity in their education avoiding the disruption of starting new schools at intermediate and secondary levels;
- Significant leadership opportunities for senior students and confidence building relationships for juniors;
- A small senior school giving our students the chance to construct 'tailor made' courses, with close and full support of highly professional staff - the success of which can be seen in our NCEA results

The school has recently installed a new computer server and access to wireless internet throughout the school grounds. This is to promote digital learning and our senior students are encouraged to bring their own laptops/tablets to school.

We are able to offer many additional courses to our students. These courses meet both their needs and interests and provide a wide range of cultural and sporting learning experiences outside the classroom.

#### **Our School Vision**

Through a positive home school partnership our students will be confident, connected, actively involved and lifelong learners.

#### **Our School Mission**

Whangamata Area School will provide for the personalised learning of all students so that they have the skills and attitudes that enable them to thrive in the future. Students will learn to understand and appreciate that mankind and nature are interconnected. We hope by acquiring these values, each student will grow and develop as a global citizen who is ready and able to connect meaningfully to the world.

#### **Whangamata Area School**





## 2. Waihi College ([www.waihicol.school.nz](http://www.waihicol.school.nz))

We pride ourselves on being a school that prepares the young men and women of the Waihi community for the future. Our aim is to develop confident, connected, life-long learners who are active contributors to the wellbeing of our community and to New Zealand.

Our students achieve excellent academic and personal success in a wide variety of endeavours. Our graduates understand the value of teamwork and self-realisation as well as being able to make informed and considered decisions that make them valuable contributing members of society.

Our school offers a broad curriculum (both in and out of the classroom) to meet the needs of our diverse range of students. Our students are challenged academically in a context of experience-learning centred education. Also, we encourage students, and provide appropriate support, to work on topics related to their personal areas of interest.

All students who come to Waihi College will be given the opportunity to excel in the many programmes and activities provided and to develop as well-rounded, balanced and productive citizens who will be able to play an important role in the New Zealand and world society.

It is our belief that students learn best when they understand the learning process and are able to participate fully in it. Our students are able to use their daily experiences to help them make sense of their knowledge and skills of different contexts in ways that are connected, real and relevant to their lives.

## 3. Paeroa College ([www.paeroacollege.school.nz](http://www.paeroacollege.school.nz))

Paeroa College is a small co-educational school set in a lovely rural location that is famous for L&P. With a roll of approximately 300 students it boasts small class sizes and a friendly family atmosphere which allow them to provide quality learning opportunities and cater for each student's need. Our small school prides itself on the sound relationships formed between staff and students. All students who come to Paeroa College will be given the opportunity to develop into confident learners who: have a passion for life, demonstrate perceptive learning skills, show respect for others and develop independence.

We welcome you to explore our education programme and hope you find it useful!

### Paeroa College



#### 4. Katikati College ([www.kkc.school.nz](http://www.kkc.school.nz))

Our focus on education is about providing a quality learning environment. The College provides meaningful learning opportunities which inspire all students to reach their full potential as valuable members of society. As a result, we have a proud tradition of academic excellence and the backing of a supportive community. The school roll currently stands at 1000 and is expected to continue to rise as more people move into our catchment zone.

Given the nature of many industries based in Katikati, the town has an appreciation of internationalism and receives regular visitors from all over the world. Both the school and community regularly welcome international guests and enjoy the interaction with them.

The College has had an extensive international student exchange programme for many years. We have deliberately restricted the number of international students (a maximum of 20 international students each year) to ensure that those fortunate enough to enrol receive the best possible support. Because of our relatively small numbers, students are well served and receive comprehensive support. They are welcomed into the College by other students and are soon integrated into the school and quickly become very much a part of it.

#### 5. Thames High School ([www.thameshigh.school.nz](http://www.thameshigh.school.nz))

Thames High School is a friendly medium sized co-educational secondary school catering for students from Year 9 to Year 13. The school has a roll of approximately 550 students. Our school believes that study abroad is an enriching experience for everyone involved. Over the years, our school has built up the infrastructure and mechanisms which ensure that students enjoy a safe and happy stay. We strive to inspire learning and develop the whole person. Priority is given to academic attainment and to developing students' initiative, creativity, self-esteem and self-discipline. Our school prides itself on having a rich and vibrant cultural life. Students are encouraged to participate in a wide range of extra-curricular activities, available both at school and out in the community. We have a dedicated International Team to help students integrate into school life, and to take full advantage of all that our school and the wider community have to offer.

##### Thames High School







Respect for Self



Respect for Others



Respect for Environment



Respect for Learning





## 6. Waihi Academy ([www.waihiacademy.co.nz](http://www.waihiacademy.co.nz))

Welcome to the **Waihi Academy**. We pride ourselves on being a viable international and multicultural family primarily focused on sharing our vision, experiences and future goals with our friends, families, colleagues and communities. We hope that all our visitors and students will find their experience here both positive and enlightening. We are confident that our courteous, friendly professional programme and service will enhance each participant's personal and spiritual well-being.

Our mission is for the **Waihi Academy** to be considered a local community educational resource that promotes peace and harmony for all who visit.

### **Mission statement:**

- To promote experience-based educational interaction between people of different languages, cultural backgrounds, age and health, personal experience, diet requirements and technical expertise.
- To promote peace and harmony through multi-cultural interactive-learning experiences that enhance personal and spiritual growth that respect the true essence of all living things.
- To promote human wellness in terms of body, mind and spirit.



### III. The *Ahurea* Experience Course

#### ◆ Outdoor Education (Week 1)

Days	Ahurea Journey	Evening Dynamic activities
Day 1	<b>Outdoor Education:</b> <b>Ski adventures of Snowplanet</b> Auckland Hotel —Snowplant —Auckland Hotel	<i>Adventure</i> <i>Harmony</i> <i>Unity</i> <i>Responsibility</i> <i>Enthusiasm</i> <i>Appreciation</i>
Day 2	<b>Outdoor Education:</b> <b>Eco tour of Waiheke Island</b> Auckland Hotel—EcoZip Adventures—Waihi Academy <b>Waihi Academy Orientation</b> <b>Welcome Assembly</b>	<i>Adventure</i> <i>Harmony</i> <i>Unity</i> <i>Responsibility</i> <i>Enthusiasm</i> <i>Appreciation</i>
Day 3	<b>Outdoor Education:</b> <b>Cultural Tour of Rotorua</b> —WA—Rotorua Skyline (Gondola+ Luge ride) — Picnic at Lake Rotorua — Redwood Tree Walk —Return WA	<i>Adventure</i> <i>Harmony</i> <i>Unity</i> <i>Responsibility</i> <i>Enthusiasm</i> <i>Appreciation</i>
Day 4	<b>Outdoor Education: Travel to Waihi Town</b> —WA (Depart at 9:00am) —Waihi Gold Discovery Centre — Waihi Town Free market Adventure —Karangahake Gorge Historic Walkway —Return WA 5:30 pm	<i>Adventure</i> <i>Harmony</i> <i>Unity</i> <i>Responsibility</i> <i>Enthusiasm</i> <i>Appreciation</i>
Day 5	<b>Outdoor Education:</b> <b>Travel to Waihi Town</b> —WA —Kiwi Fruit Orchard and Dairy Farm adventure— Waihi Gold Discovery Centre/Town and Lunch Adventure — Waihi Beach and Kiwi Host Families Adventure — Return WA	<i>Adventure</i> <i>Harmony</i> <i>Unity</i> <i>Responsibility</i> <i>Enthusiasm</i> <i>Appreciation</i>

© The lessons and activities are subject to change. The local schools reserve the right to make changes to the lessons and activities.

*Adventure* The art of succeeding in knowing yourself / in finding yourself.

*Harmony* The art of creating a beautiful life symphony.

*Unity* The art of being together in peace and harmony. Teamwork - The Power of Shared Vision

*Responsibility* Dreams begin when you shoulder your responsibilities.

Focusing on the processes and patterns of Circle of Life.

*Enthusiasm* Enlighten their faith in believing in themselves and inspire endless potential.

*Appreciation* Share the joy of every moment's blessing.

## ◆ Daily schedule and Timetable (Week 2)

### ● Daily schedule

		Monday	Tuesday	Wednesday	Thursday	Friday
Day	7:00am-7:10am	Get up	Get up	Get up	Get up	Get up
	7:10am-7:30am	Morning Surprise				
	8:00am-08:45am	Breakfast				
	9:00am-10:30am	Period 1	Period 1	Period 1	Period 1	Period 1
	10:30am-11:00am	Break				
	11:00am-12:30am	Period 2	Period 2	Period 2	Period 2	Period 2
	12:30am-1:30pm	Lunch				
	1:30pm-3:00pm	Period 3	Period 3	Period 3	Period 3	Period 3
Evening	3:00pm-5:00pm	Period 4 Dynamic Activity	Period 4 Dynamic Activity	Period 4 Dynamic Activity	Period 4 Dynamic Activity	Period 4 Dynamic Activity
	5:00pm-6:00pm	Dinner Time				
	6:30pm-8:30pm	Period 5 Ahurea Project	Period 5 Ahurea Project	Period 5 Ahurea Project	Period 5 Ahurea Project	Period 5 Ahurea Project
	8:30pm-09:00pm	Wind-down & Free time & Reflective journal-camp diary 15 mins				
	09:00pm	Lights out				

#### Day--Period 1, Period 2 and Period 3 :

The students will be challenged with the following rich tasks which require them **to co-operate, to communicate with each other and to think!** Each day the students are at **Waihi Academy** they will have a lesson in: English (creatively learning and practising in English), Social Science (to understand the NZ culture, learn how to living in NZ, understand the NZ's education system and the way to study) and Health and Physical Education. Each lesson will be 100 minutes long and will vary timeslots on a rotating basis.

#### Week 3 & Week 4 :

- The daily schedule will be different, students will be put into different schools and each school all have a different activity timetable.
- Buddy Program —Participant will be paired with a local student to share both cultures and build a memorable friendship together.

© The lessons and activities are subject to change. The local schools reserve the right to make changes to the lessons and activities.



● Timetable (Week 2)

	Monday	Tuesday	Wednesday	Thursday	Friday
<b>9-10:30 Period 1</b>	Maori Legends Maori words, Role play, legend, waiata, weaving	NZ Geo Tourist Spots, NZ map, Travel mag, tour guide	Bush Experience Leave Only Footprints, plant ID, medicinal plants	Kiwiana Idioma, Icons, All Blacks, Haka, Kapahaka group?	In a NZ home Manners, Conversation, Footwear, Food, Role-plays
	<b>Interval</b>				
<b>11-12:30 Period 2</b>	Maori Art painting Group Mural	Tour Guide Presentation	Native Fauna Presentation	Kiwiana group posters	Baking-Anzac Biscuits
	<b>Lunch</b>				
<b>1:30-3:00 Period 3</b>	Ki-o-Rahi Paper, paint, Fence standards 6, 40 gallon drum, rippa set, cones 10	Kiwi Cricket NZ travel mags, NZ map, Kiwi cricket set, tennis balls 10	Rippa Rugby Native plant books, ID cards, paper, pens, Rippa Set, cones 10	Touch Kiwiana items, Kapahaka group? rugby balls 5, cones 10, set of team bands	Netball Netballs 10, bibs, cones 10, spots 12, baking equipment
<i>Ahurea</i>	<i>Harmony, Unity, Enthusiasm, Appreciation</i>	<i>Appreciation, Enthusiasm</i>	<i>Adventure, Harmony, Responsibility, Enthusiasm</i>	<i>Appreciation</i>	<i>Harmony, Responsibility, Unity, Enthusiasm, Appreciation</i>

© The lessons and activities are subject to change. The local schools reserve the right to make changes to the lessons and activities.

*Adventure* The art of succeeding in knowing yourself / in finding yourself.

*Harmony* The art of creating a beautiful life symphony.

*Unity* The art of being together in peace and harmony. Teamwork - The Power of Shared Vision

*Responsibility* Dreams begin when you shoulder your responsibilities.

Focusing on the processes and patterns of Circle of Life.

*Enthusiasm* Enlighten their faith in believing in themselves and inspire endless potential.

*Appreciation* Share the joy of every moment's blessing.

## ◆ Evening Dynamic Activities Outline (Week 1 and Week 2)



Play, Learn & Grow together!

Students who participate in the AHUREA Experience will enjoy the evening course's themes which changes from week to week. The activities are linked to a variety of different subjects; these subjects are linked to participation in a range of "Dynamic Activities" as well as formal classroom tuition and outdoor adventure. In addition, students will also be preparing performances for the Final Appreciation Night program, which is a demonstration of their first 2 week's learning. The following activities are the key elements of the *Ahurea* Adventure.

1. Exploration Task- Seeing Your Challenge
2. Treasure Hunt- Seeing Team AKO
3. Cultural Sparks- Seeing Our Newscast
4. Flying Team- Seeing Kiwi AKO



"*Ahurea* Adventure"

Evening Activities outline	Monday to Friday
	Period 4 Dynamic Activities Period 5 Ahurea Project
<i>Adventure</i> The art of succeeding in knowing yourself / in finding yourself.	A1,A2,A3,A4,A5
<i>Harmony</i> The art of creating a beautiful life symphony.	H1,H2,H3,H4,H5
<i>Unity</i> The art of being together in peace and harmony. Teamwork - The Power of Shared Vision	U1,U2,U3,U4,U5
<i>Responsibility / Revival</i> Dreams begin when you shoulder your responsibilities. Focusing on the processes and patterns of Circle of Life.	R1,R2,R3,R4,R5
<i>Enthusiasm</i> Enlighten their faith in believing in themselves and inspire endless potential.	E1,E2,E3,E4,E5
<i>Appreciation</i> Share the joy of every moment's blessing.	Ap1,Ap2,Ap3,Ap4,Ap5









# Whangamata Area School

*“Uplift and foster mana”*

## An outline of an action packed week for cultural adventure (Week 3 and Week 4)

“**Koru time**” is an invention of our school and it’s a positive way to start the day and ensure that any issues are addressed and dealt with. It stands for:

**Knowledge**= what we all should be seeking including knowledge of others and knowledge of ourselves.

**Organisation**= ensuring that we are organised for our day, week & future!

**Respect**= both for ourselves and others.

**Unity**= promotion of our collective vision that will benefit us all.

	Monday	Tuesday	Wednesday	Thursday	Friday
8:45am–09:00am	Koru Time				
Period One 9:00am–10:00am	Music	Social Science	Class visits and joint activities	Town Activity	Outdoor Education activity with qualified outdoor Education Teacher, weather permitting
Period Two 10:00am–11:00am	Art	Social Science	Class visits and joint activities	ESOL Lesson	
Break 1 11:00am–11:40am	Interval				
Period Three 11:40am–12:40pm	Art	Class visits and joint activities	Maori Culture	ESOL Lesson	
Period Four 12:40am–01:40pm	Technology/ Wood	Food	ESOL Lesson	Maths Activity	
Break 2 01:00pm–02:00pm	Lunch				
Period Five 02:00pm–03:00pm	Technology/ Wood	Food	ESOL Lesson	Maths Activity	
Notes	RED = <i>Special subject classes</i> All periods are tentative and will depend on teacher availability and timetables.				



© The lessons and activities are subject to change. The local schools reserve the right to make changes to the lessons and activities.

## An outline of an action packed week for cultural interactive adventure (Week 3 and Week 4)



	Monday	Tuesday	Wednesday	Thursday	Friday
<b>Learning Advisory</b> 8:50am-9:10am	Welcome Assembly	Students assigned to a LAG class with NZ buddy student	Students assigned to a LAG class with NZ buddy student	Students assigned to a LAG class with NZ buddy student	Students assigned to a LAG class with NZ buddy student
Period One 9:15am–10:45am	ESOL Lesson	ESOL Lesson	ESOL Lesson	ESOL Lesson	ESOL Lesson
Period Two 11:10am–12:10am	Class visits and joint activities	Special subject classes	Class visits and joint activities	Special subject classes	Class visits and joint activities
Period Three 12:15am–01:15pm	Special subject classes	Half Day Excursion in the local area Waihi	Special subject classes	Half Day Excursion in the local area Waihi	Special subject classes
Period Four 02:05pm–03:05pm	Special subject classes		Special subject classes		Farewell Activities
Notes	<b>Special subject classes</b> include Kiwi Sports, Maori Culture, Technology, Cooking, Drama, Art and Music. All periods are tentative and will depend on teacher availability and timetables.				

© The lessons and activities are subject to change. The local schools reserve the right to make changes to the lessons and activities.



# Katikati College

*"Ever trying, Ever onward"*

## An outline of an action packed week for cultural interactive adventure (Week 3 and Week 4)

	Monday	Tuesday	Wednesday	Thursday	Friday
8:30am-8:50am	Arrive at school	Form period with buddies	Form period with buddies	Form period with buddies	Form period with buddies
Period One 8:50am-09:50am	Powhiri	Classes with buddies	Classes with buddies	Classes with buddies	Steel Pan lessons
Period Two 9:50am –10:50am	School tour & orientation with buddies	Classes with buddies	Classes with buddies	Classes with buddies	Steel pan lessons
Period Three 11:20am –01:20pm	ESOL with Mrs Green C8	ESOL with Mrs Green in B3 Cooking prep	ESOL with Mrs Green	Pacifica in B3	ESOL in B3
Period Four 01:20pm –02:00pm	ESOL with Mrs Green C8	Cooking in T4	Meet in B2 for lunch before Museum Visit	Pacifica in B3	ESOL with Mrs Green
Period Five 02:00pm –03:00pm	KaitiKati MURAL/ TOWN VISIT—Mrs Green	ESOL with Mrs Green in B3	Museum Adventure	ESOL with Mrs Green	Farewell party
3:05pm	Home with hosts	Home with buddies	Home with buddies	Home with buddies	Home with buddies



© The lessons and activities are subject to change. The local schools reserve the right to make changes to the lessons and activities.





# Paeroa College

## *"Excellence in Everything"*

### An outline of an action packed week for cultural interactive adventure (Week 3 and Week 4)

	Monday	Tuesday	Wednesday	Thursday	Friday
8:45am-9:00am	Students to Library	In form class with buddies	In form class	All students in form class with buddies	In form class with buddies
Period One 9:00am-10:00am	Powhiri in the Hall. Meet their buddies	Maori Culture/Taiwanese Culture exchange	In form class with buddies	In class with buddies	In class with buddies
Period Two 10:00am-11:00am	Go to class	Maori Culture/Taiwanese Culture exchange	In class with Buddies	In class with buddies	Gymnasium activities – basketball or touch
Period Three 11:25am-12:25pm	In class with their buddies	Maori Culture/Taiwanese Culture exchange	Bullswool farm experience	In class with buddies	In class with buddies
Period Four 12:25pm –01:25pm	Handcraft session in workshop	Maori Culture/Taiwanese Culture exchange	Bullswool farm experience	In class with buddies	Gymnasium activities – basketball or touch
Period Five 02:05pm-03:05pm	Handcraft session in workshop	Maori Culture/Taiwanese Culture exchange	In class with buddies	In class with buddies	Home Ec to make Choco-chip cookies
3:05pm	Home with hosts	Home with buddies	Home with buddies	Home with buddies	Home with buddies



© The lessons and activities are subject to change. The local schools reserve the right to make changes to the lessons and activities.



# Thames High School

*Ut Prosim Patriae*  
*"That I May be Worthy of My Country"*

**An outline of an action packed week for cultural interactive adventure  
 (Week 3 and Week 4)**

	Monday	Tuesday	Wednesday	Thursday	Friday
Period One 8:45am-10.25	Powhiri & Kai in Whare	Special Subject Class	Special Subject Class  10.25am-11.05am Learning Advisory (with Buddies)	Special Subject Class	Special Subject Class
Period Two 11.20am–1.00pm	Meet buddies. School Tour & Orientation  12.35pm-1.00pm School Assembly	Visit local Goldmine & Tour of Thames township	ESOL Lesson	Classes with Buddies	Classes with Buddies
Period Three 1.40pm – 3.20pm	Special Subject Class	Classes with Buddies	Classes with Buddies	ESOL Lesson	Farewell Party with Buddies
Special Subject classes may include Physical Education, Drama, Maori Culture, Art, or Cooking					

## 2015 Student Leaders



© The lessons and activities are subject to change. The local schools reserve the right to make changes to the lessons and activities.

# *The Ahurea Experience*



## THE AHUREA EXPERIENCE

*New Zealand* 紐西蘭

***Koru:** New life, Growth, Strength and Inner peace.*

***Koru** 新生活、成長、力量和內心的平靜。*